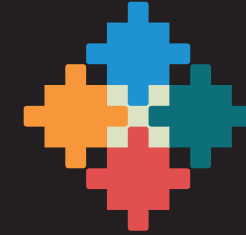




InCommon

Cultural and Educational Interventions
for the Exercise of the Active Citizenship
of Migrant Women

<http://www.documenta.es/web/incommon/>



InCommon

Cultural and Educational Interventions
for the Exercise of the Active Citizenship
of Migrant Women

PARTNERS:



www.documenta.es



www.dimitra.gr



EDIT.C

EDUCATION & INFORMATION TECHNOLOGY CENTRE

www.editc.eu



www.kist-consult.com



www.eapncantabria.wordpress.com



ΔΗΜΟΣ ΛΑΡΙΣΣΑΙΩΝ
MUNICIPALITY OF LARISSA

www.larissa-dimos.gr



www.skepalem.wordpress.com/author/skepalem



www.gainandsustain.eu



This project has received funding from Asylum, Migration and Integration Fund (AMIF) from the European Commission, DG for Migration and Home Affairs under the grant agreement 776199.

This communication reflects only the views of the author, and the European Commission cannot be held responsible for any use which may be made of the information contained herein.



EUROPEAN UNION

Asylum, Migration
and Integration Fund

CULTURE IS A COMMON GOOD, PARTICIPATE, CREATE, BUILD CITIZENSHIP



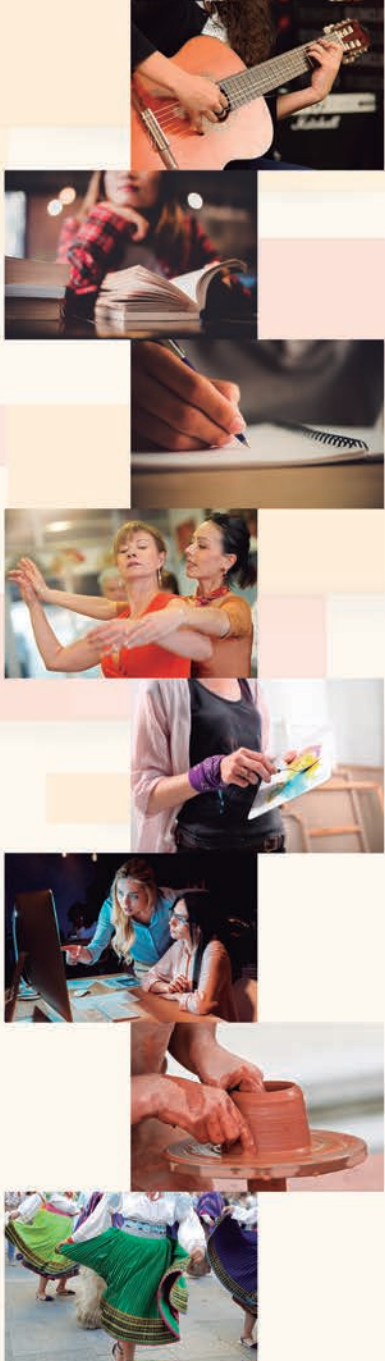
CULTURE IS A COMMON GOOD, PARTICIPATE, CREATE, BUILD CITIZENSHIP

Participating in culture is to participate in the community, having a voice and being a part of it. To achieve this, we all need to have the tools and access to the resources that allow the fulfilment of this right. Respecting our origin but also opening to the host society and the communities it is made of.

From InCommon we want to make these words a reality and make a meeting place available for migrant women where they can express themselves, learn and experience active citizenship.

What do we offer?

Your participation in a transcultural group of women where you receive training on digital, interpersonal and civic skills, as well as cultural expression. This training will allow you to organise together with volunteers and other entities your own educational and cultural activities.



What type of activities will be carried out?

Activities related to **music, reading and writing, dance, arts and new technologies**, as well as **handcraft and folklore**.

What is InCommon for?

To know the cultural entities in your city, to know how to get in contact with them and to take advantage of their educational and cultural resources. Being able to put this knowledge at the disposal of your own community.

Training and access to all of these resources are free and participation of women with special family situations (children, other family responsibilities) are facilitated.

If you find this proposal interesting, feel free to participate in the InCommon project session, where you will be given in-detail information about the project.

DATE/PLACE:

ABOUT INCOMMON

InCommon is a project funded by the Asylum, Integration, Migration Fund (AMIF) of the European Commission and DG Home which consists of partners from Austria, Cyprus, Spain and Greece, for the integration of refugees and migrants.

More information about the project: www.documenta.es/web/incommon